



Artist Concept - Not to be used as an Official Document.

Building on a solid reputation!



Montpellier

Montpellier

2291 sq. ft.

Special Features of This Home

- *Large open concept kitchen with walk-in pantry, dining and family room with cozy gas fireplace*
- *Oversized double car garage.*
- *Laundry room on second floor.*
- *Spacious primary bedroom with large walk-in closet, complemented with private ensuite featuring soaker tub and separate shower enclosure.*
- *All bedrooms feature walk-in closets.*

*Environmentally Conscious
Energy Efficient Design*



**Home
Construction
Regulatory
Authority**

**SALES OFFICE AND
MODELS OPEN DAILY**

Tel.: 613-443-2402

Fax: 613-443-0120

www.melanieconstruction.com

Mélanie Construction is proud to present new innovative designed single family homes in Faubourg Ste-Marie Hamlet and SunSet Flats.

The growing population of this country community values its village charm and the personalized services offered by privately owned and operated businesses.

This Community is situated away from traffic areas. Within walking distance to the downtown core with all the village facilities, schools, arena and nature trail. It is ideal for families looking for an enjoyable country lifestyle.

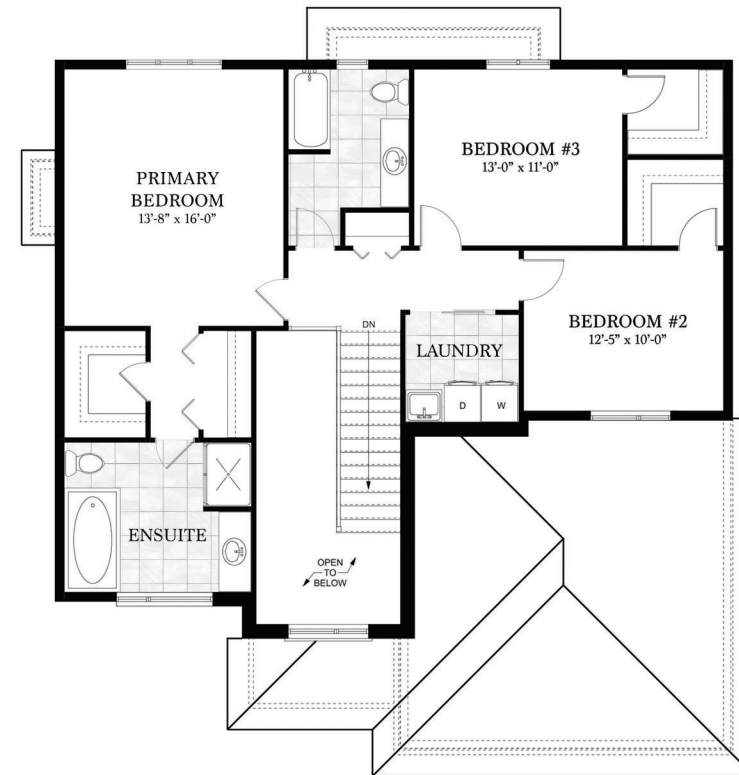
Building on a solid reputation!



Montpellier



Main Floor Plan
Living Area: 2291 sq. ft.



Second Floor Plan

Materials, Specifications and Floor Plans are subject to change without notice. All dimensions are approximate. E. & O.E.