



*Artist Concept - Not to be used as an Official Document.*

*Building on a solid reputation!*



*Castleview*

# *Castleview*

*2462 sq. ft.*

## *Special Features of This Home*

- *Three car Garage.*
- *Large open concept kitchen with large walk-in pantry, dining and family room with cozy gas fireplace.*
- *Separate laundry room on second floor including deep sink and cabinet.*
- *Spacious primary bedroom with large walk-in closet, complemented with private ensuite featuring soaker tub and separate shower enclosure.*
- *Oversized bedrooms all with walk-in wardrobes.*

*Environmentally Conscious  
Energy Efficient Design*



**SALES OFFICE AND  
MODELS OPEN DAILY**

Tel.: 613-443-2402

Fax: 613-443-0120

[www.melanieconstruction.com](http://www.melanieconstruction.com)



*Faubourg  
Ste-Marie  
Hamlet*

*Mélanie Construction is proud to present new innovative designed single family homes in Faubourg Ste-Marie Hamlet .*

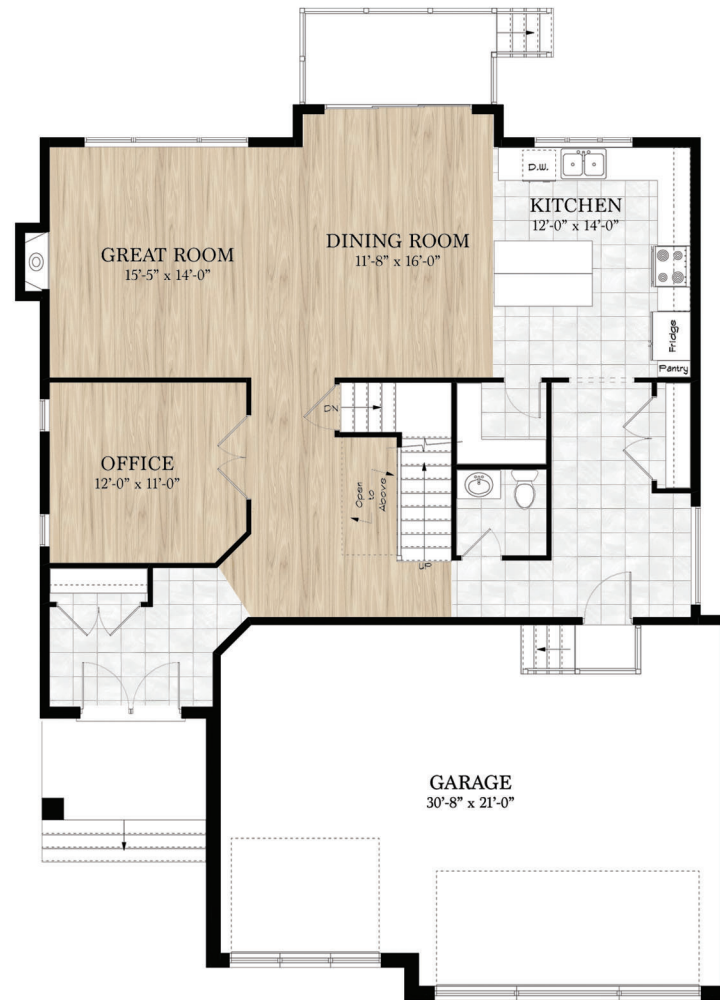
*The growing population of this country community values its village charm and the personalized services offered by privately owned and operated businesses.*

*This Community is situated away from traffic areas. Within walking distance to the downtown core with all the village facilities, schools, arena and nature trail. It is ideal for families looking for an enjoyable country lifestyle.*

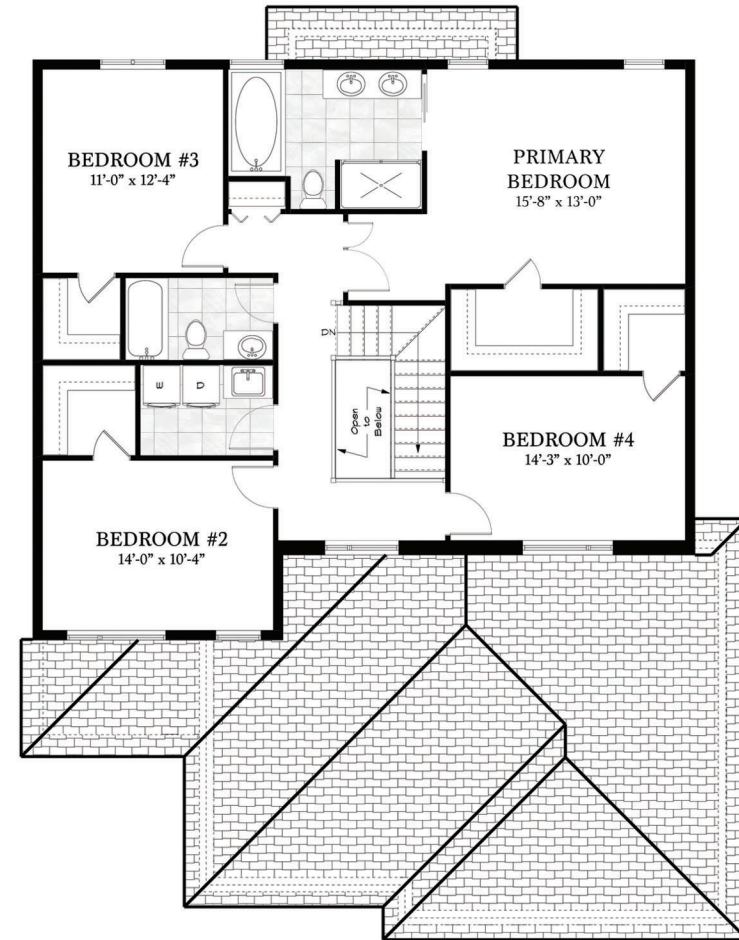
*Building on a solid reputation!*



*Castleview*



*Main Floor Plan  
Living Area: 2462 sq. ft.*



*Second Floor Plan*

*Materials, Specifications and Floor Plans are subject to change without notice. All dimensions are approximate. E. & O.E.*