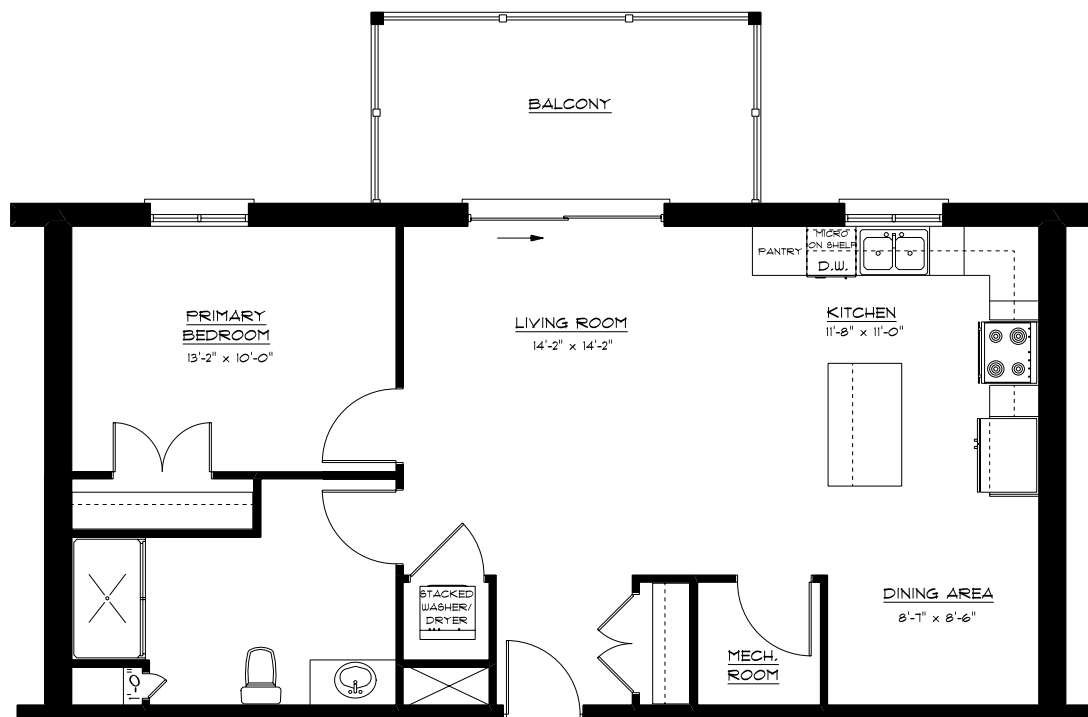


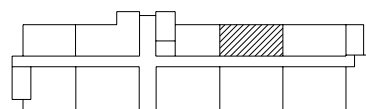
UNIT 406 - \$2,185.00
UNIT 504 - \$2,185.00

767 SQ.FT.
BARRIER FREE UNIT



KEY PLAN

PROVENCE AVENUE



ST. MORITZ TERRACE

ALL ILLUSTRATIONS ARE ARTIST'S CONCEPTS. MATERIALS, SPECIFICATIONS & FLOOR PLANS ARE SUBJECT TO CHANGE WITHOUT NOTICE. ALL DIMENSIONS ARE APPROXIMATE AND MAY NOT BE TO SCALE. ACTUAL USABLE FLOOR SPECS MAY VARY FROM THE STATED FLOOR PLAN. LAYOUT FOR KITCHEN, BATHROOM & MECHANICAL MAY VARY FROM PLAN. VERTICAL & HORIZONTAL BULKHEADS, WHICH ARE NOT SHOWN ON THE PLAN, MAY BE REQUIRED FOR STRUCTURAL, PLUMBING AND HEATING RUNS.

PLEASE CONSULT THE SALES REPRESENTATIVE FOR ANY FURTHER INFORMATION.