



Artist Concept - Not to be used as an Official Document.

Building on a solid reputation!



Primrose

Primrose

1557 sq. ft.

Special Features of This Home

- *Single car Garage.*
- *Open concept kitchen, dining and family room.*
- *Spacious primary bedroom with walk-in closet.*

*Environmentally Conscious
Energy Efficient Design*



**Home
Construction
Regulatory
Authority**

**SALES OFFICE AND
MODELS OPEN DAILY**

Tel.: 613-443-2402

Fax: 613-443-0120

www.melanieconstruction.com

Mélanie Construction is proud to present new innovative designed single family homes in *Faubourg Ste-Marie Hamlet* and *SunSet Flats*.

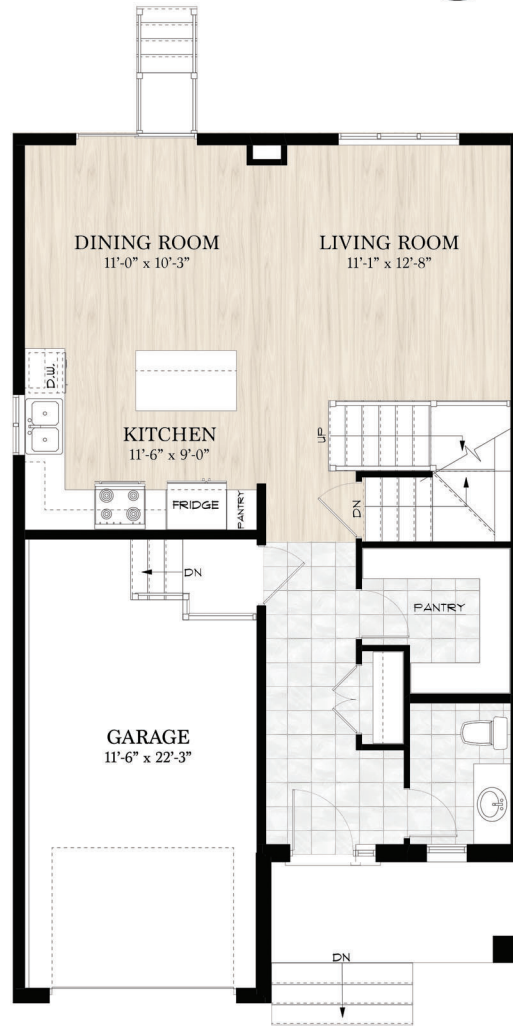
The growing population of this country community values its village charm and the personalized services offered by privately owned and operated businesses.

This Community is situated away from traffic areas. Within walking distance to the downtown core with all the village facilities, schools, arena and nature trail. It is ideal for families looking for an enjoyable country lifestyle.

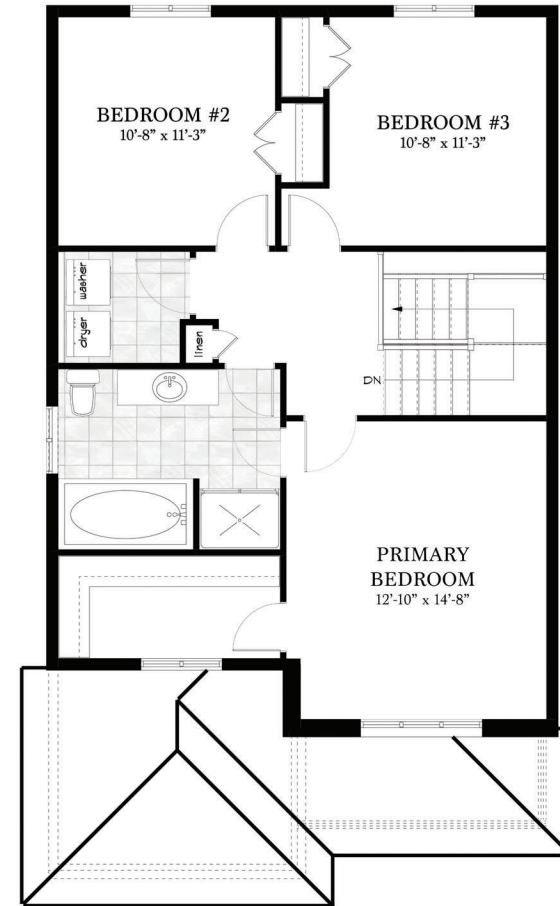
Building on a solid reputation!



Primrose



Main Floor Plan
Living Area: 1557 sq. ft.



Second Floor Plan

Materials, Specifications and Floor Plans are subject to change without notice. All dimensions are approximate. E. & O.E.