



Artist Concept - Not to be used as an Official Document.

Building on a solid reputation!



Belfort

Belfort

1513 sq. ft.

Special Features of This Home

- *Double car Garage.*
- *Large open concept kitchen including walk-in pantry, dining and family room with cozy gas fireplace.*
- *Main floor laundry room.*
- *Spacious primary bedroom with large walk-in closet, complemented with private ensuite featuring soaker tub and separate shower enclosure.*
- *Cathedral ceiling in great room.*

*Environmentally Conscious
Energy Efficient Design*

Registered
Builder in
Ontario
Since 1983

**SALES OFFICE AND
MODELS OPEN DAILY**
Tel.: 613-443-2402
Fax: 613-443-0120
www.melanieconstruction.com

Mélanie Construction is proud to present new innovative designed single family homes in Faubourg Ste-Marie Hamlet and SunSet Flats.

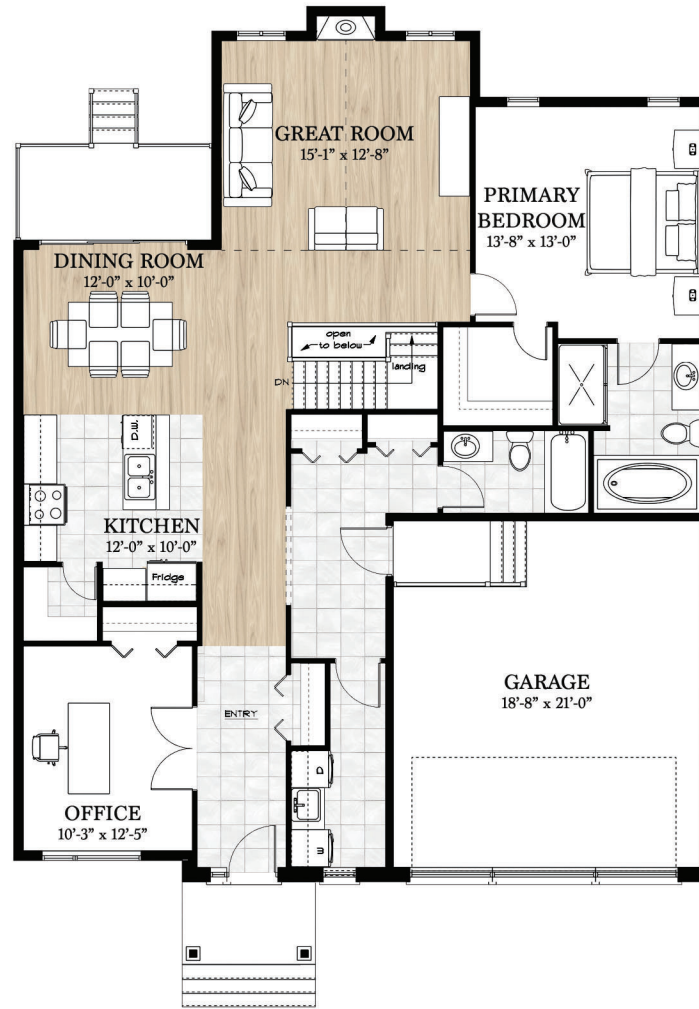
The growing population of this country community values its village charm and the personalized services offered by privately owned and operated businesses.

This Community is situated away from traffic areas. Within walking distance to the downtown core with all the village facilities, schools, arena and nature trail. It is ideal for families looking for an enjoyable country lifestyle.

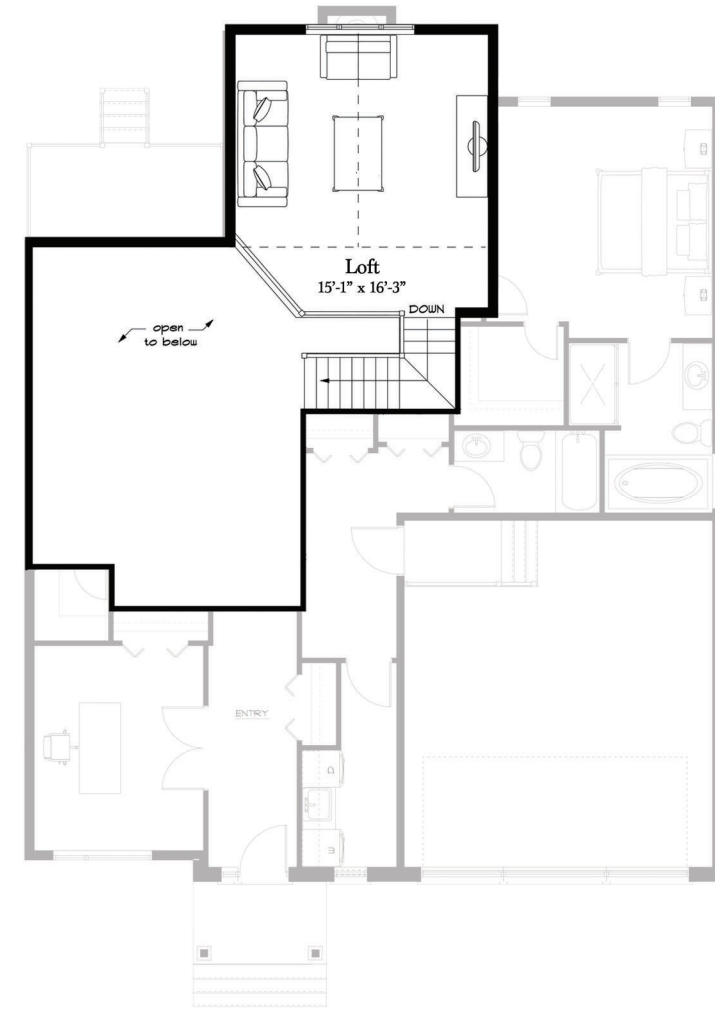
Building on a solid reputation!



Belfort



Main Floor Plan
Living Area: 1513 sq. ft.



Loft Option (Add 25,000)
Area: 260 sq. ft.

Materials, Specifications and Floor Plans are subject to change without notice. All dimensions are approximate. E. & O.E.