

Artist Concept - Not to be used as an Official Document.



*Building on a solid reputation!*

*Ludlow*

# *Ludlow*

*2032 sq. ft.*

## *Special Features of This Home*

- ▶ *Huge open concept kitchen with centre island and walk-in pantry.*
- ▶ *Laundry room on main level.*
- ▶ *Prominent Staircase with balcony open below to front entrance.*
- ▶ *Dormer in master bedroom and bedroom #3.*
- ▶ *Walk-in closet in master bedroom.*
- ▶ *Full ensuite with shower and soaker tub.*
- ▶ *High efficiency fireplace in living room.*

*Environmentally Conscious  
Energy Efficient Design*



*Registered  
Builder in  
Ontario  
Since 1983*

**SALES OFFICE AND  
MODELS OPEN DAILY**

Tel.: 613-443-2402

Fax: 613-443-0120

[www.melanieconstruction.com](http://www.melanieconstruction.com)

*Faubourg  
Ste-Marie  
Hamlet*

*Mélanie Construction is proud to present new innovative designed single family homes in Faubourg Ste-Marie Hamlet.*

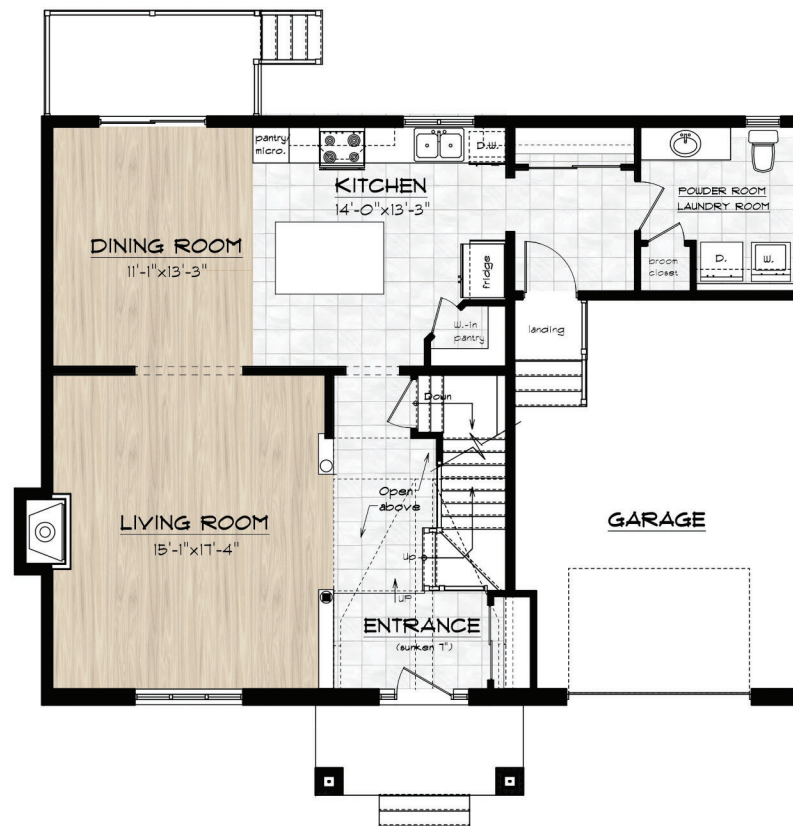
*The growing population of this country community values its village charm and the personalized services offered by privately owned and operated businesses.*

*This Community is situated away from traffic areas. Within walking distance to the downtown core with all the village facilities, schools, arena and nature trail. It is ideal for families looking for an enjoyable country lifestyle.*

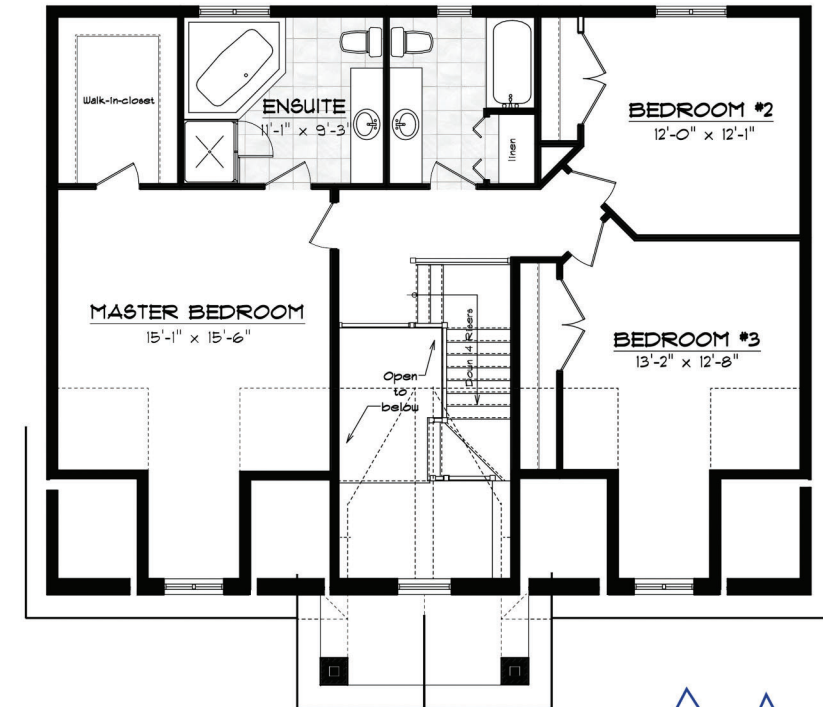
*Building on a solid reputation!*



*Ludlow*



Main Floor Plan  
Living Area: 2032 sq. ft.



Second Floor Plan



Materials, Specifications and Floor Plans are subject to change without notice. All dimensions are approximate. E. & O.E.