

The Vienna I

2242 sq.ft.

Special features of this home

Double car garage.

Sunken front entrance complimented with ceramic.

Huge open concept kitchen and nook.

Spacious family room.

Luxury formal living and dinning room.

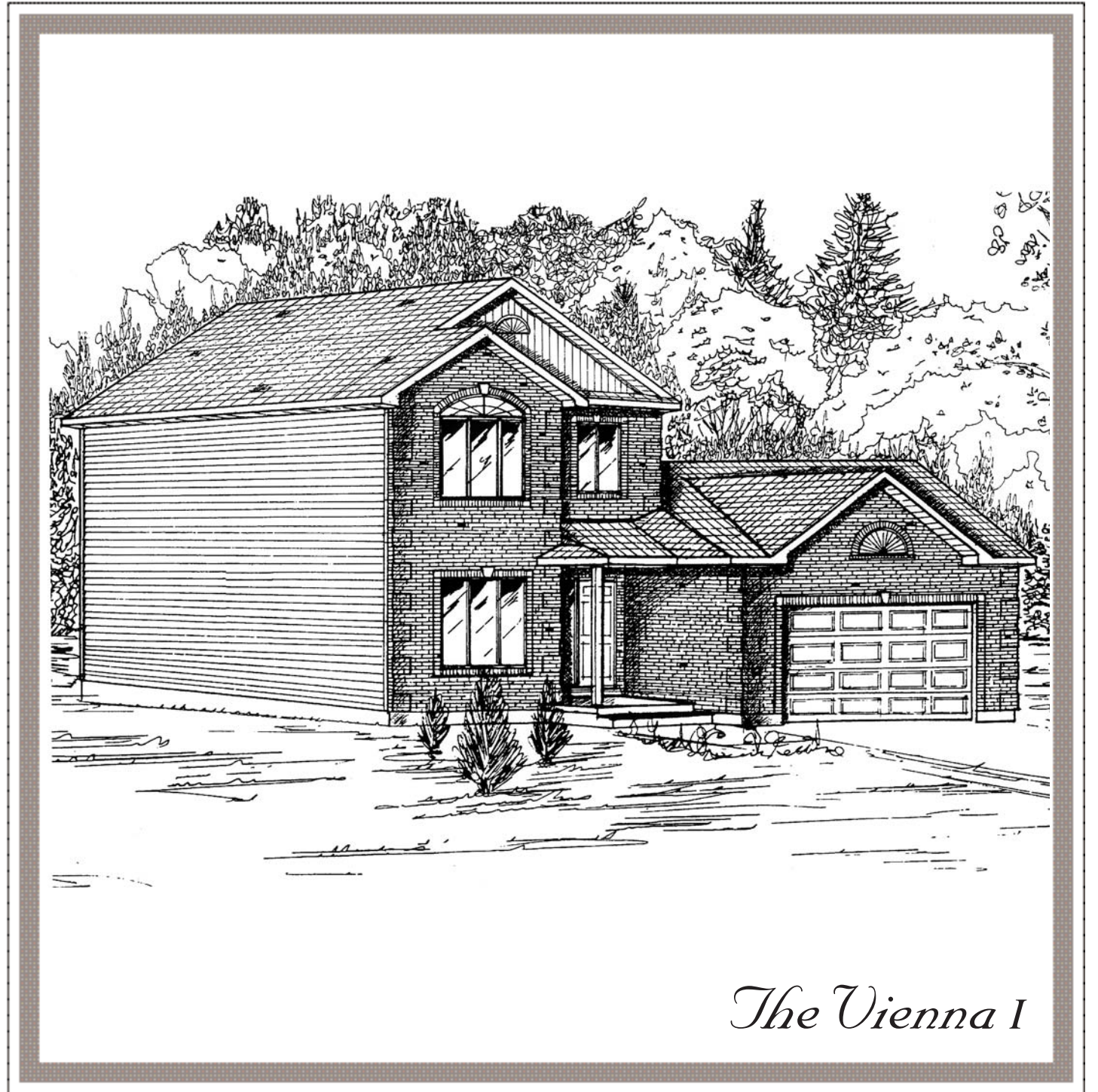
Master bedroom complimented with private ensuite featuring Roman tub and separate shower enclosure.

Master bedroom features huge walk-in wardrobe.

All homes equipped with HRV and High Efficiency Gas Furnace.

*Building on
a solid reputation!*


Mélanie
CONSTRUCTION INC.
RUSSELL, ONTARIO
613 443-2402



The Vienna I

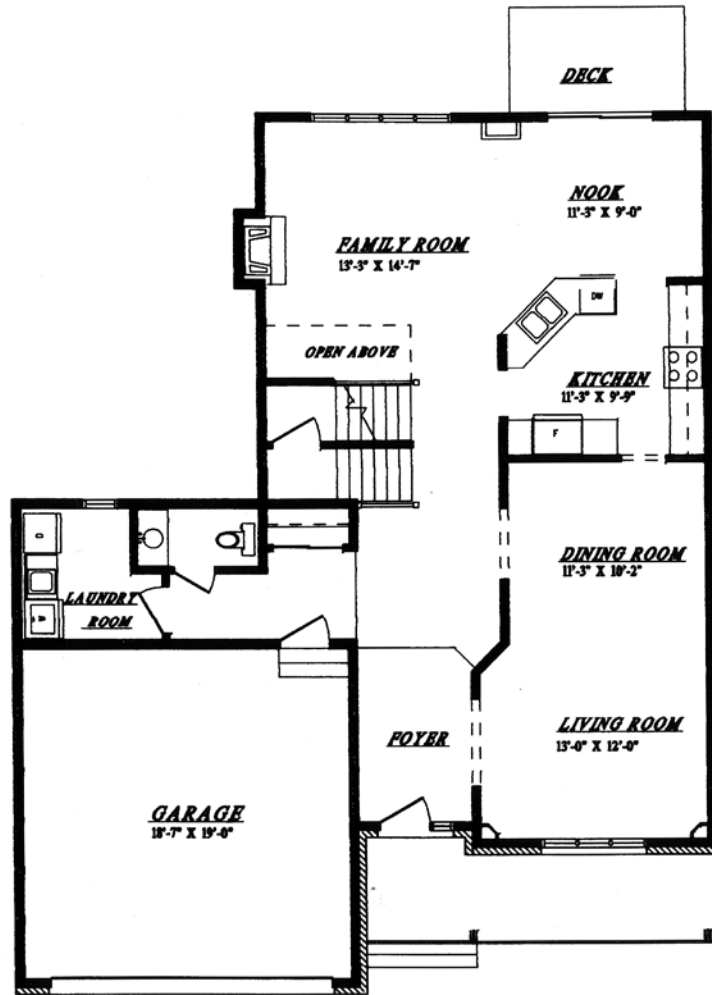
Olde Towne West Phase I

Building on a solid reputation!

Mélanie construction is proud to present new innovative designed single family homes in **Olde Towne West phase I.**

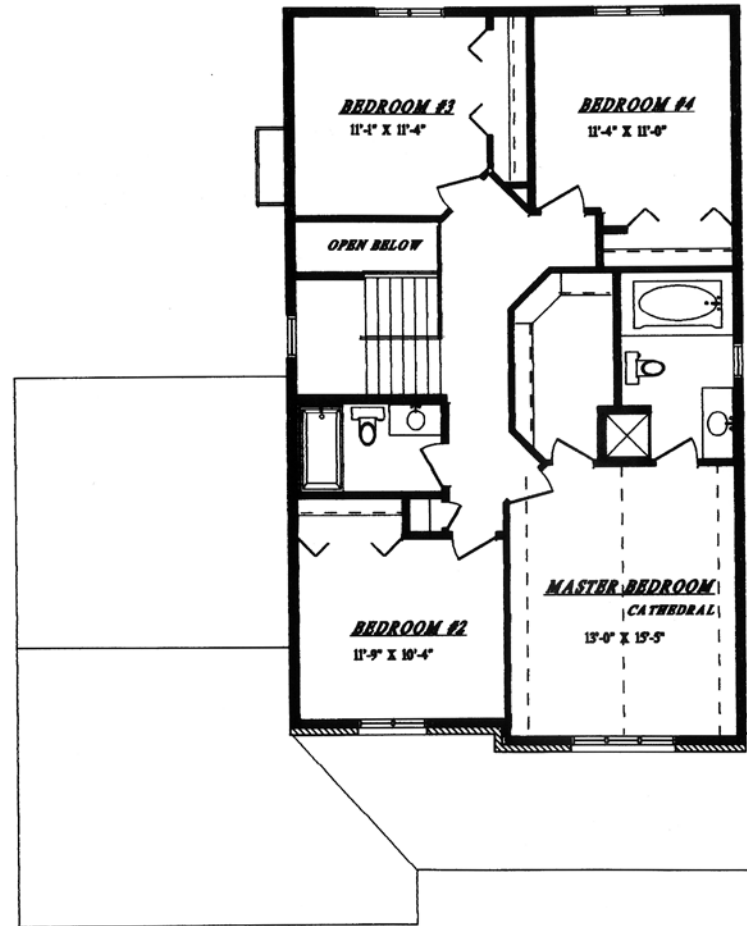
The growing population of this country community values its village charm and the personalized services offered by privately owned and operated businesses.

This community is situated away from traffic areas. Within walking distance to the downtown core with all the village facilities, schools, arena and nature trail. It is ideal for families looking for an enjoyable country lifestyle.



MAIN FLOOR PLAN

1154 SQ.FT.
TOTAL : 2242 SQ.FT.



SECOND FLOOR PLAN

1088 SQ.FT.



The Vienna I

