

The Victoria II

2540 sq.ft.

Special features of this home

Spacious front entrance with veranda across the front.

Huge open concept kitchen open to nook and family room.

Breakfast nook with sliding glass doors to rear deck and yard.

Formal living and dining room features cathedral ceiling.

Family room features cosy gas fireplace.

Hardwood in distinct area on main floor.

Sunlit master bedroom has coffered ceiling.

Laundry room on main floor.

Double oversize garage.

**All homes equipped with HRV and
High Efficiency Gas Furnace.**

*Building on
a solid reputation!*



Artist Concept - Not to be used as an official document

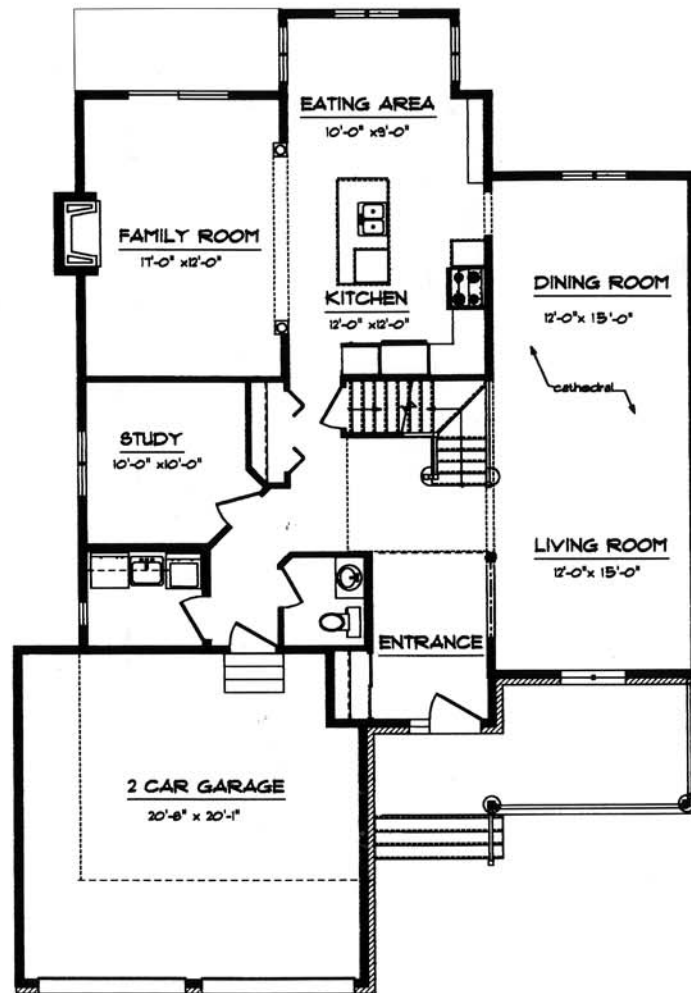
Olde Towne West Phase I

Building on a solid reputation!

Mélanie construction is proud to present new innovative designed single family homes in **Olde Towne West phase I.**

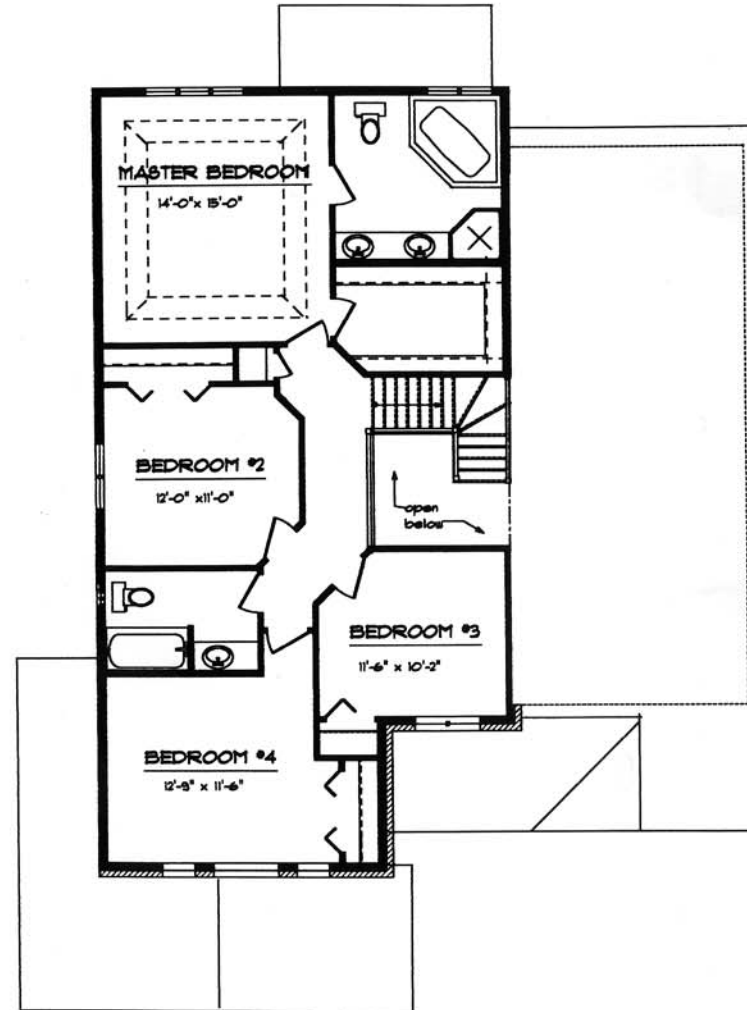
The growing population of this country community values its village charm and the personalized services offered by privately owned and operated businesses.

This community is situated away from traffic areas. Within walking distance to the downtown core with all the village facilities, schools, arena and nature trail. It is ideal for families looking for an enjoyable country lifestyle.



MAIN FLOOR PLAN

**1356 SQ.FT.
TOTAL : 2540 SQ.FT.**



SECOND FLOOR PLAN

1184 SQ.FT.



The Victoria II

