

# *The Oxfordshire*

1998 sq.ft.

## *Special features of this home*

---

Large open concept kitchen, dining and family room with cozy gas fireplace

Center island in kitchen for extra work space

Easy access laundry located centrally on upper level

Comfortable bright loft area on upper level

Spacious master bedroom with large walk-in closet, complemented with private ensuite featuring soaker tub and separate shower enclosure

**All homes equipped with HRV and High Efficiency Gas Furnace.**

*Building on  
a solid reputation!*



Artist Concept - Not to be used as an official document

# Olde Towne West

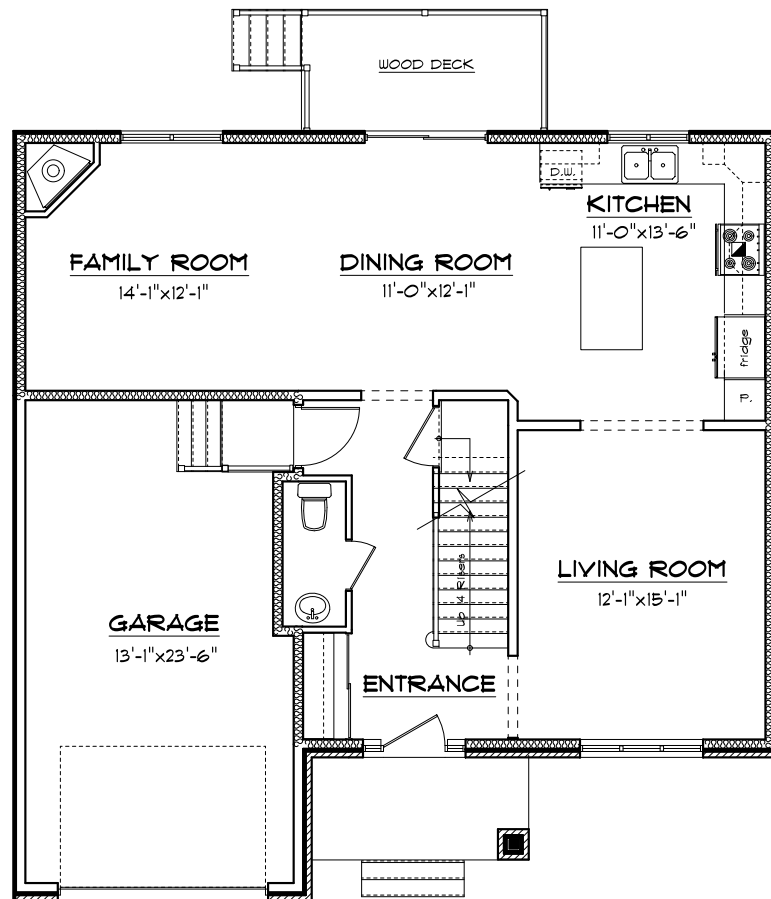
## Phase I & II

*Building on a solid reputation!*

*Mélanie* construction is proud to present new innovative designed single family homes in **Olde Towne West** phase I & II.

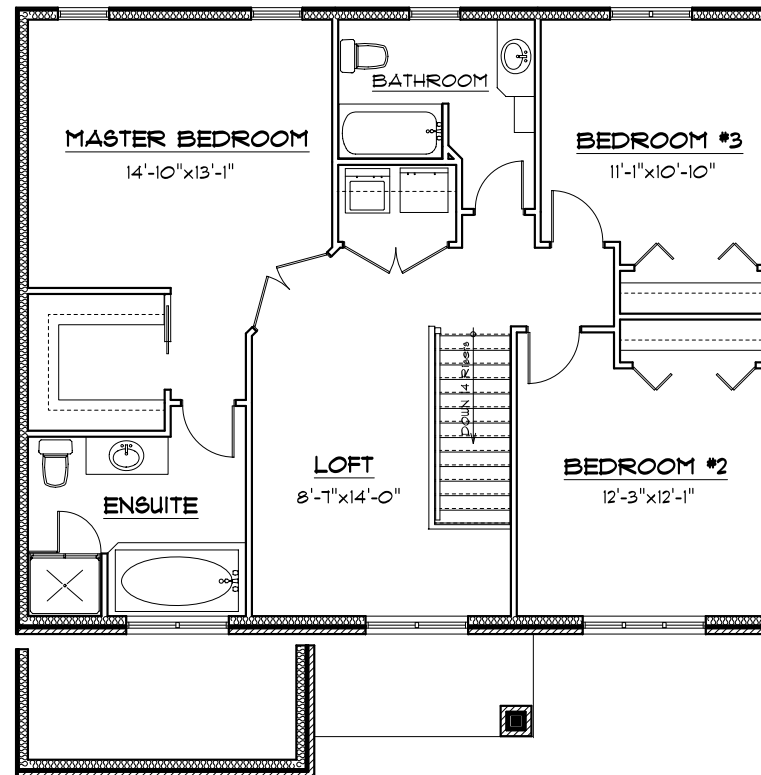
The growing population of this country community values its village charm and the personalized services offered by privately owned and operated businesses.

This community is situated away from traffic areas. Within walking distance to the downtown core with all the village facilities, schools, arena and nature trail. It is ideal for families looking for an enjoyable country lifestyle.



MAIN FLOOR PLAN

888 SQ.FT.  
TOTAL : 1998 SQ.FT.



SECOND FLOOR PLAN

1110 SQ.FT.



*The Oxfordshire*

