

The Budlow

2032 sq.ft.

Special features of this home

Huge open concept kitchen with center island and walk-in pantry.

Laundry room on main level.

Prominent staircase with balcony open below to front entrance.

Dormer in master bedroom and bedroom #3.

Walk-in closet in master bedroom.

Full en-suite with shower and soaker tub.

High efficiency fireplace in living room.

All homes equipped with HRV and High Efficiency Gas Furnace.

*Building on
a solid reputation!*



The Budlow

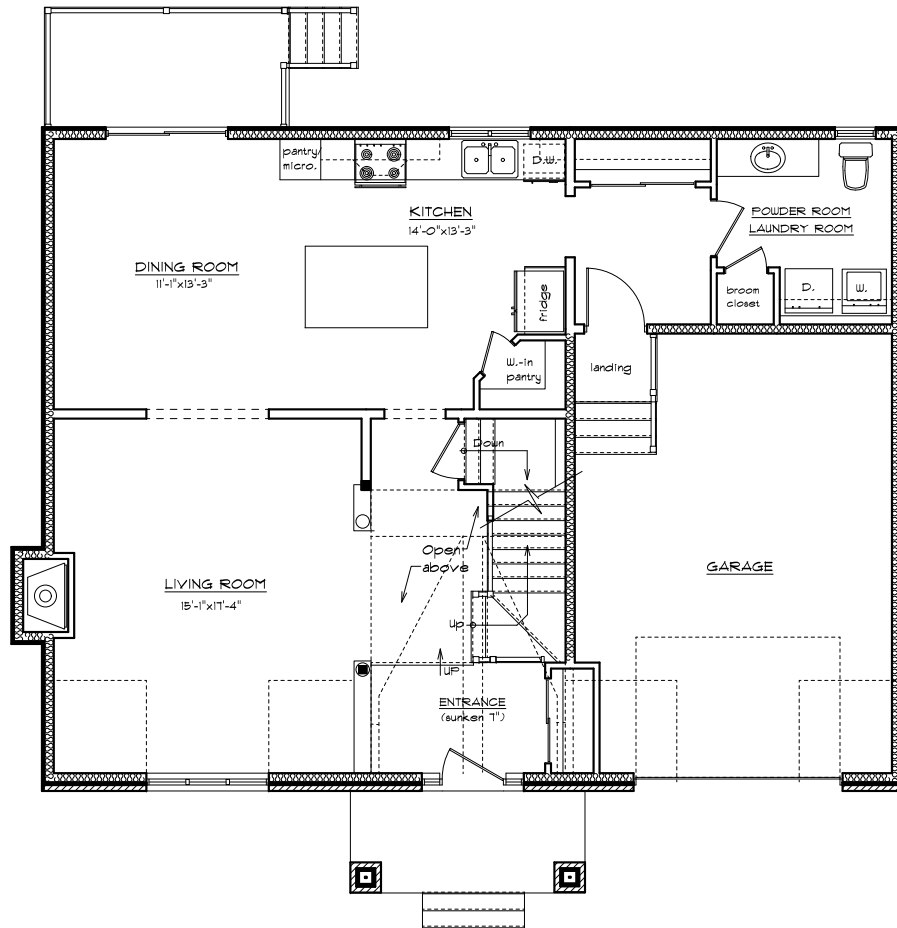
Olde Towne West Phase I

Building on a solid reputation!

Mélanie construction is proud to present new innovative designed single family homes in **Olde Towne West** phase I.

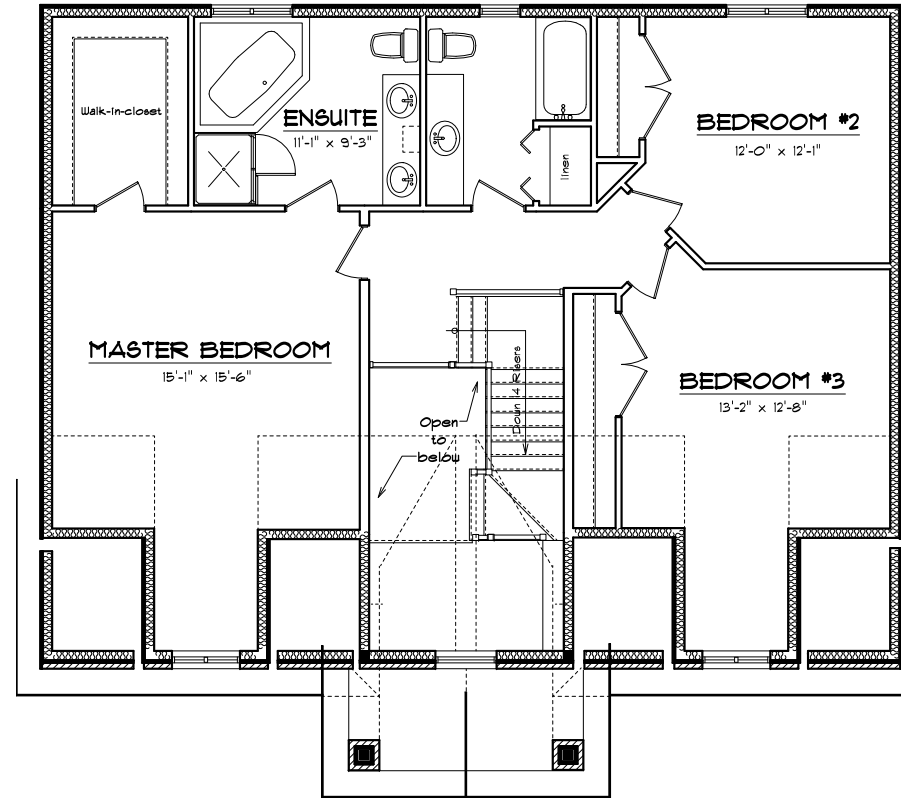
The growing population of this country community values its village charm and the personalized services offered by privately owned and operated businesses.

This community is situated away from traffic areas. Within walking distance to the downtown core with all the village facilities, schools, arena and nature trail. It is ideal for families looking for an enjoyable country lifestyle.



MAIN FLOOR PLAN

**1000 SQ.FT.
TOTAL : 2032 SQ.FT.**



SECOND FLOOR PLAN

1032 SQ.FT.



The Ludlow

